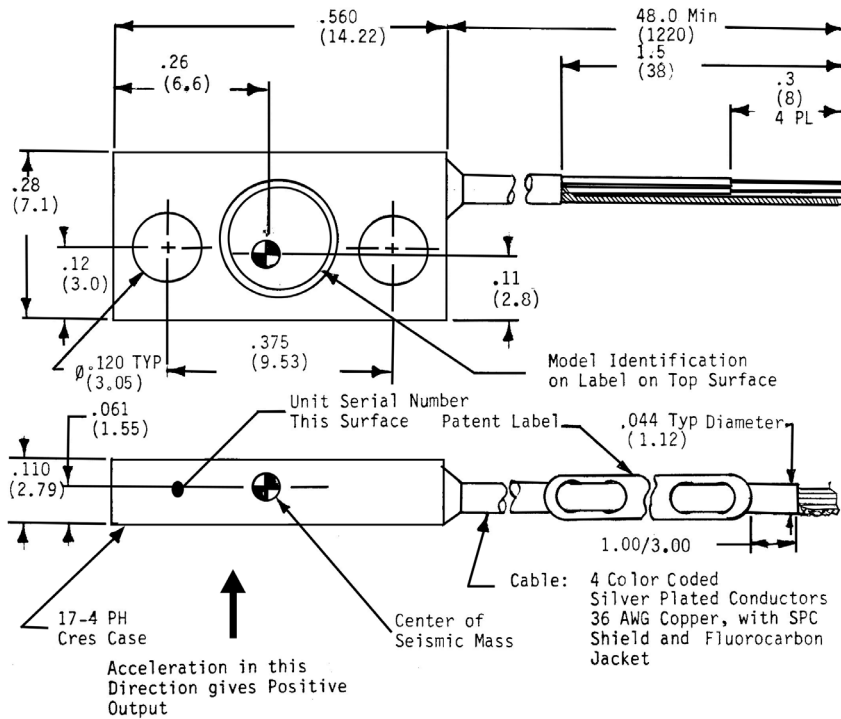


Piezoresistive accelerometer

Model 7270A



Standard Tolerance	
Inches	(Millimeters)
.XX	= ±.03
.XXX	= ±.010
.X	= ±.8
.XX	= ±.25

Key features

- 2K, 6K, 20K, 60K and 200K full scale ranges
- High resonance frequency
- Broad frequency response
- Minimal zero shift after shock

Description

The Endevco model 7270A is a family of rugged undamped piezoresistive accelerometers designed for shock applications. The model 7270A features minimal mass loading, broad frequency response, and minimum zero shift during a shock event.

The 7270A uses a unique micro-machined, piezoresistive sensor with gages arranged in a full wheatstone bridge circuit. The extremely small size and efficient construction allow for exceptionally high resonant frequency. The flat, lightweight case is designed to reduce the effect of case resonance for optimal frequency response.

200,000g range is subject to International Traffic in Arms Regulations (ITAR), and as such a license is required for shipments outside the U.S. and other restrictions may apply.

Piezoresistive accelerometer | Model 7270A

All specifications are referenced at +75°F (+24°C) and 10 Vdc, unless otherwise noted. Calibration data, traceable to National Institute of Standards and Technology (NIST), is supplied.

Specifications						
Dynamic characteristics	Units	2K	6K	20K	60K	200K
Linear range	g	2,000	6,000	20,000	60,000	200,000
Sensitivity min/typ [1]	µV/g	50/100	15/30	5/10	1.5/3	.5/1
Frequency response +/-5%	Hz	0 to 10,000	0 to 20,000	0 to 50,000	0 to 100,000	0 to 150,000
Natural frequency (typ)	kHz	90	180	350	700	1200
Shock limit [max]	g	10,000	18,000	60,000	180,000	200,000
Zero measureand output (max at 10V)	mV	+/-100	+/-100	+/-100	+/-100	+/-100
Transverse sensitivity (max)	%	5	5	5	5	5
Thermal zero shift (typ) [2] -30°F to +150°F (-34°C to +66°C)	mV	+/-10	+/-10	+/-10	+/-10	+/-10
Thermal sensitivity shift	%/C	-0.12	-0.12	-0.12	-0.12	-0.12
Electrical characteristics						
Excitation	Vdc	2 to 12 (10 standard)				
Resistance						
input	Ω	650 ± 300				
output	Ω	650 ± 300				
Isolation resistance		100 MΩ min at 100 VDC between leads (shorted together) and cable shield or case				
Physical characteristics						
Case material		17-4 CRES				
Weight (excluding cable)	grams	1.5				
Cable		(4) 36 AWG SPC, shield, FEP jacket cable weight 0.10 oz/ft (2.83 g/ft)				
Mounting		4-40 high strength screws (x2) Recommended mounting torque, 8 ± 2 lbf-in (0.9 N-m)				
Environmental						
Temperature						
Operating [3]	°C (F°)	- 55 to + 121 (- 67 to + 250)				
Storage	°C (F°)	- 55 to + 121 (- 67 to + 250)				
Calibration data						
Data for sensitivity, ZMO, input and output resistance are supplied on the calibration						

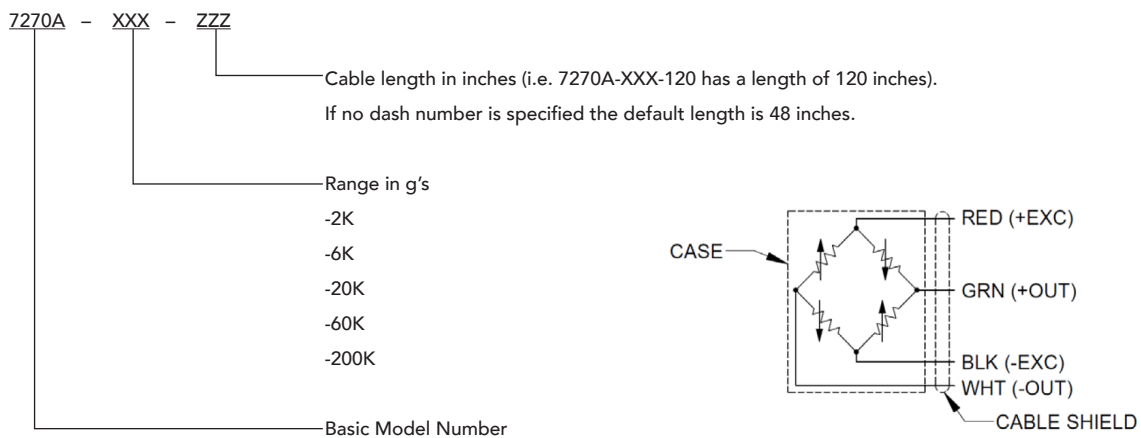
Piezoresistive accelerometer | Model 7270A

Accessories		
Options	Description	
EH137	[2] 4-40 high strength screws	Included
EHW265	[2] No. 4 washers	Included
7970	Triaxial mounting block	Optional
K7270AM6	Mechanical isolator conversion kit	Optional

Options	
Options	Description
M4	1/4 - 28 stud mount package
M6	Enclosed in mechanical isolator with 1/4 - 28 stud
M7	Ruggedized with low noise cable
M16	Calibrated at 5V excitation
M26	Calibrated at 3.3V excitation
-Z	Fixed resistors only

Notes

- Sensitivity measured at 5,000g, except for 2,000g model measured at 2,000g
- Operating temperatures above 93C (200F) result in unpredictable thermal zero shift. T.Z.S. should be monitored and/or managed by auto-zeroing to insure no loss in data due to signal saturation.
- 150°F is the maximum recommended operating temperature with 10 Vdc excitation. In applications requiring higher operating temperatures, lower excitation voltage is recommended.
- Maintain high levels of precision and accuracy using Endevco's factory calibration services. Call Endevco's inside sales force at 866-ENDEVCO for recommended intervals, pricing and turn-around time for these services as well as for quotations on our standard products.
- Model number definition:



10869 NC Highway 903, Halifax, NC 27839 USA

endevco.com | sales@endevco.com | 866 363 3826

© 2022 PCB Piezotronics - all rights reserved. PCB Piezotronics is a wholly-owned subsidiary of Amphenol Corporation. Endevco is an assumed name of PCB Piezotronics of North Carolina, Inc., which is a wholly-owned subsidiary of PCB Piezotronics, Inc. Accumetrics, Inc. and The Modal Shop, Inc. are wholly-owned subsidiaries of PCB Piezotronics, Inc. IMI Sensors and Larson Davis are Divisions of PCB Piezotronics, Inc. Except for any third party marks for which attribution is provided herein, the company names and product names used in this document may be the registered trademarks or unregistered trademarks of PCB Piezotronics, Inc., PCB Piezotronics of North Carolina, Inc. (d/b/a Endevco), The Modal Shop, Inc. or Accumetrics, Inc. Detailed trademark ownership information is available at www.pcb.com/trademarkownership.